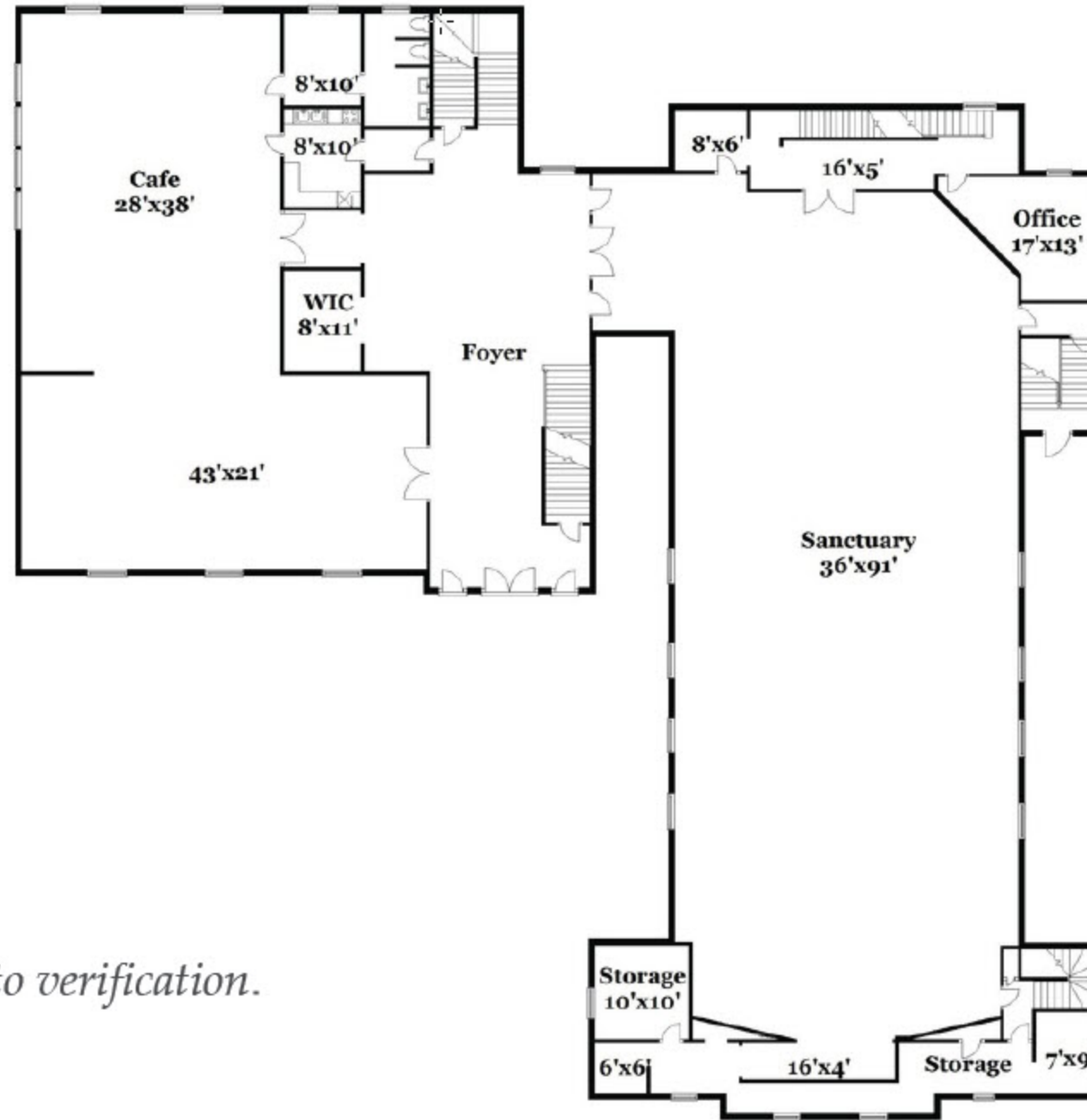
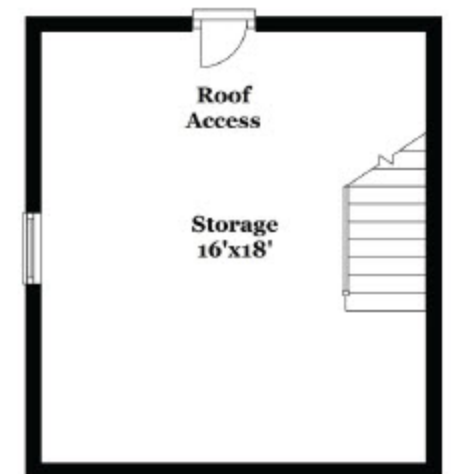


## MAIN FLOOR



*Measurements subject to verification.*



# REDEVELOPMENT OPPORTUNITY

GRAND RAPIDS, MICHIGAN

## LOWER LEVEL



*Measurements subject to verification.*



## FOR MORE INFORMATION:

Drew Nelson  
Broker  
616.975.3739  
[dnelson@bradleyco.com](mailto:dnelson@bradleyco.com)

Bradley Company  
161 Ottawa Ave. NW, Suite 308  
Grand Rapids, MI 49503  
[bradleyco.com](http://bradleyco.com)

©2018 Bradley Company, LLC and affiliates. Use of any third party name or mark is for informational purposes only and does not indicate sponsorship or endorsement by such party. Any property information presented above has been obtained from sources believed reliable. Not all information has been independently verified, and Bradley Company, LLC makes no guarantee, warranty or representation about its accuracy. Any projections, opinions, or estimates are for example only and do not necessarily represent the future performance of a property. Before completing a real estate transaction, you and your advisors should conduct an independent investigation of the property to determine its suitability for your needs.

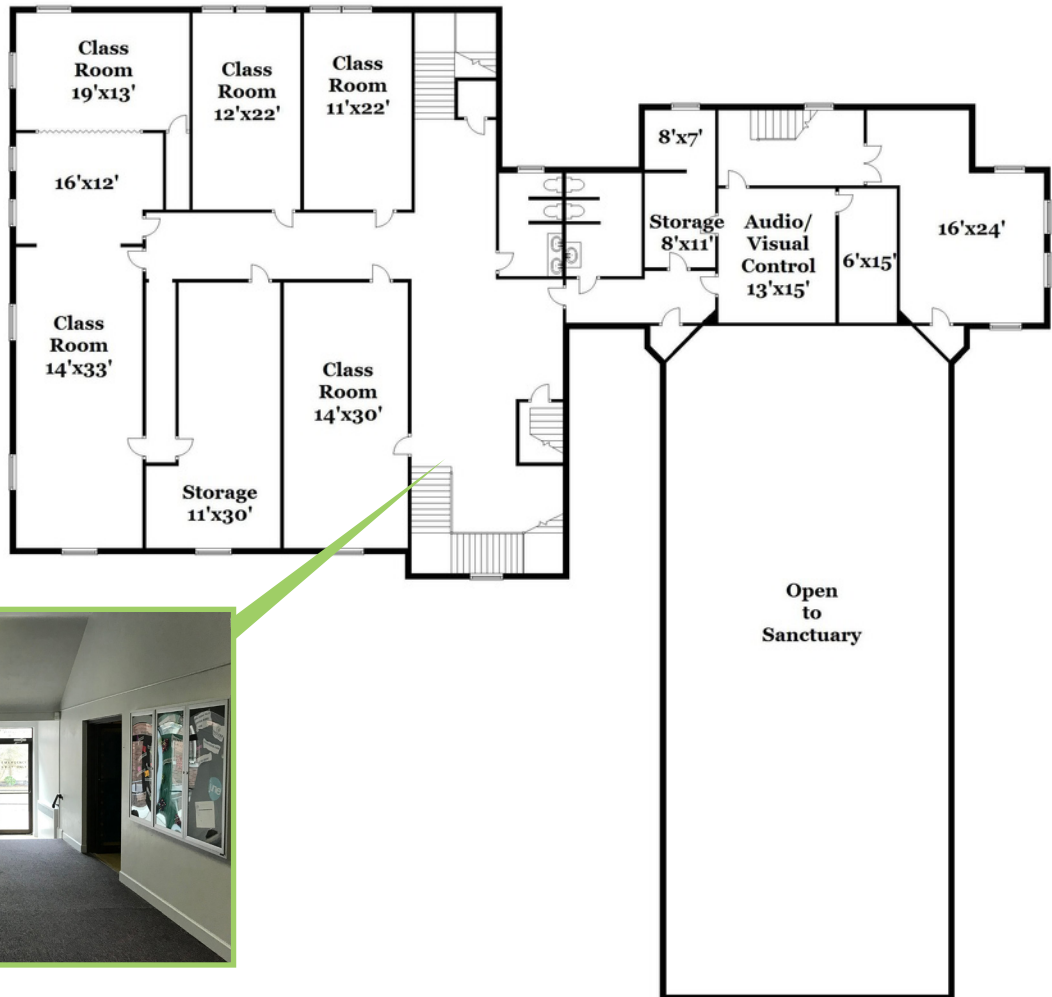


# REDEVELOPMENT OPPORTUNITY

200 MADISON AVENUE SE., GRAND RAPIDS, MI 49593

## FOR SALE

### UPPERLEVEL



### FOR MORE INFORMATION:

**Drew Nelson**  
Broker  
616.975.3739  
[dnelson@bradleyco.com](mailto:dnelson@bradleyco.com)

**Bradley Company**  
161 Ottawa Ave. NW, Suite 308  
Grand Rapids, MI 49503  
[bradleyco.com](http://bradleyco.com)

©2018 Bradley Company, LLC and affiliates. Use of any third party name or mark is for informational purposes only and does not indicate sponsorship or endorsement by such party. Any property information presented above has been obtained from sources believed reliable. Not all information has been independently verified, and Bradley Company, LLC makes no guarantee, warranty or representation about its accuracy. Any projections, opinions, or estimates are for example only and do not necessarily represent the future performance of a property. Before completing a real estate transaction, you and your advisors should conduct an independent investigation of the property to determine its suitability for your needs.

