

Property at a Glance



Property Address:

103 & 111 E. Grand River Ave., Portland, MI 48875

County:

Ionia County

Township:

City of Portland

Zoning:

Central Business District

PP #: 300-050-000-175-00

Commercial Buildings on the Grand River

ONLINE REAL ESTATE AUCTION August 8, 2017 from 8 am - 2 pm. Opening Bid only \$2500. This property features two commercial buildings situated on the Grand River in Downtown Portland on the corner of Kent St. and Grand River Ave. The first building features a 14' overhead door, 16' ceilings, concrete floors, modine heater, and a possible storage/office area. The second building includes an 8' overhead door, concrete floors, heater and a basement. Both buildings need some work but would make a great investment property or building to move a business into. Please see our website for more info, photos, and terms.

OPENING BID: \$2,500

OPEN FOR VIEWING:

For additional questions on the property please contact Jordan Miedema by phone at **616-460-8936 or by email at **jordan@1800lastbid.com**

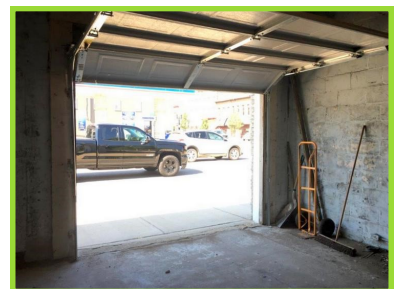
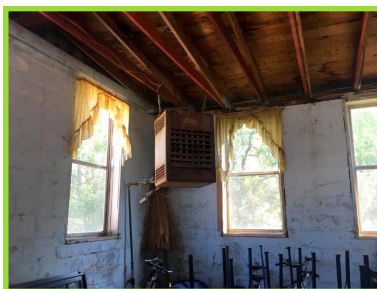
SEV: \$

Taxable Value: \$

Summer Taxes: \$

Winter Taxes: \$

School District: Portland Schools





103 & 111 E. Grand River Avenue, Portland, MI 48875



www.bid.lastbidrealstate.com

Contact: Jordan Miedema — 616-460-8936

jordan@1800lastbid.com

601 Gordon Industrial Ct., Byron Center, MI 49315 * 210 N. Grace St., McBain, MI 49657

MIEDEMA ASSET MANAGEMENT GROUP

