

Property at a Glance



Auction Date: August 30, 2016

Property Address:

2100 Mais Road, West Branch, MI 49661

County:

Ogemaw County

Township:

West Branch Township

Zoning:

Country Estate

PP #: Part of 0014-008-039-00 (Approximately 77 acres of the current 80)

Parcel 1: 77 Partially Wooded Acres

ONLINE REAL ESTATE AUCTION August 30, 2016 from 8 am - 2 pm. Opening Bid only \$20,000. This property features a 129 acre operating golf course offered in 3 separate parcels or in it's entirety. Parcel 1 is 77 acres of scenic rolling hills, woods, ponds, ½ mile of spring-fed trout stream, and part of Crapo Lake. Encompassing 12 holes of Apple Valley Golf Course, this parcel is one of the prettiest in Ogemaw County and could provide prime, beautiful building sites. It could also be repurposed for a Hunt & Fish Club, used for private recreation, set up as a 9 or 12-hole links, or in a combination golf and RV/camping setup. Irrigated greens, tees and fair-ways. Approximately 45 acres are tillable. Electricity is currently sourced from the adjacent parcel. Purchase adjacent 5 acres and house for a recreational/holiday retreat, homestead and 80 acres, or to use as a club-house/play & stay to go with the 9 or 12-hole course. Several attractive options to be considered! Please see our website for more info, photos, and terms.

OPENING BID: \$20,000

OPEN FOR VIEWING: Monday, August 22, Noon – 2pm and Friday, August 26, Noon – 2pm

****For additional questions on the property please contact Dan Shaarda by phone at 231-878-5356 or by email at dshaarda@1800lastbid.com**

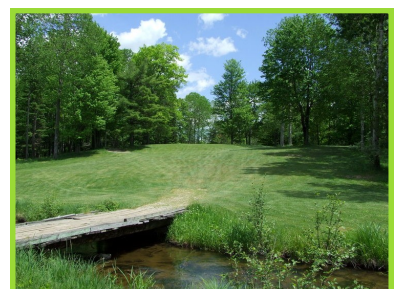
SEV: Part of \$263,000 (2015)

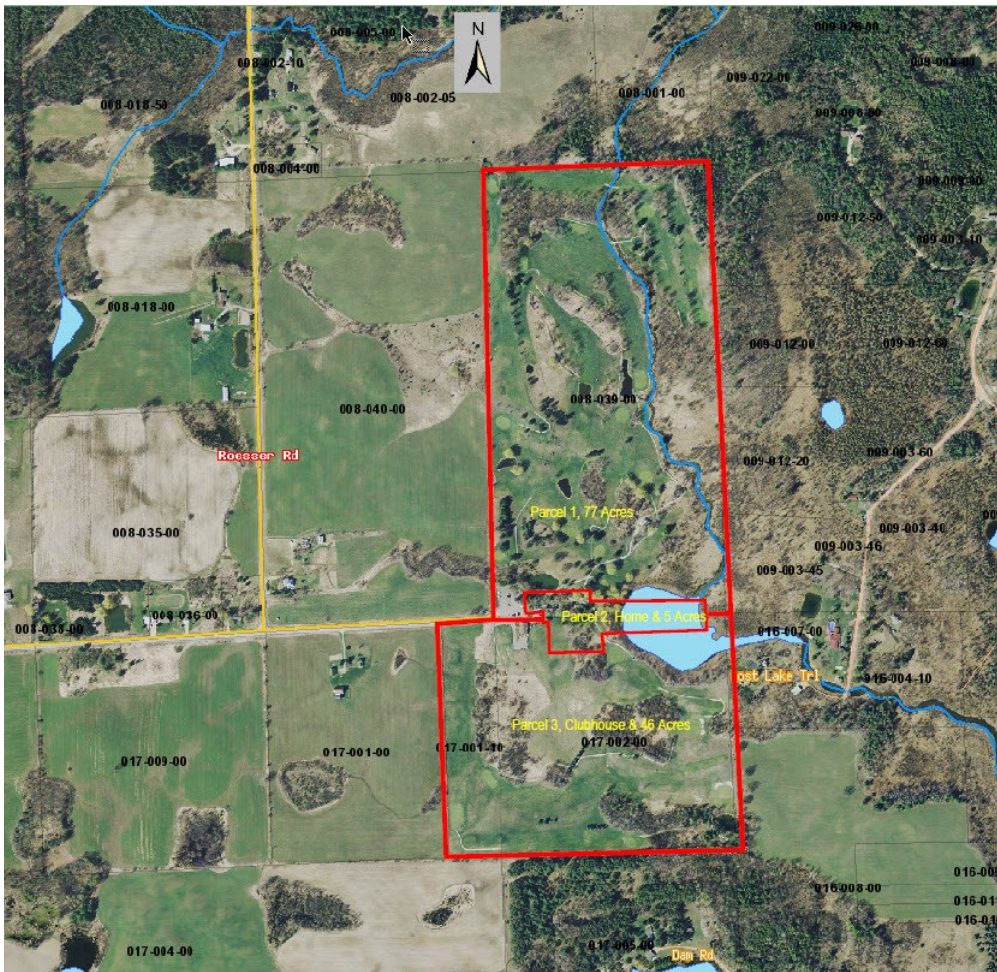
Taxable Value: Part of \$151,019 (2015)

Summer Taxes: Part of \$1,957.22 (2016)

Winter Taxes: Part of \$6,140.23 (2015)

School District: West Branch-Rose City Schools





2100 Mais Road, West Branch, MI 48661